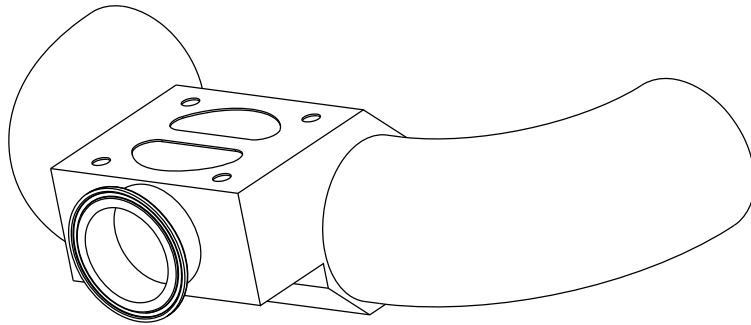
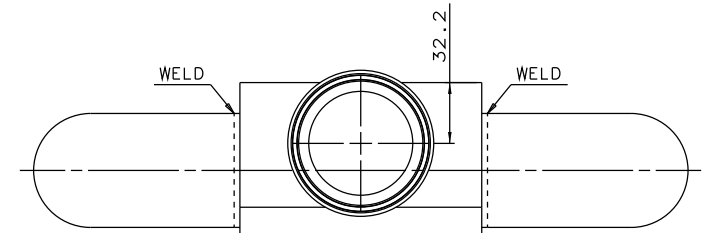
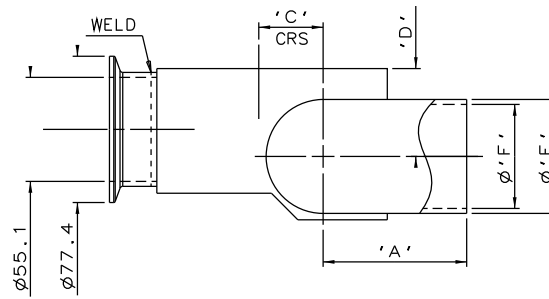
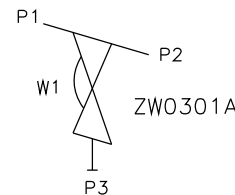
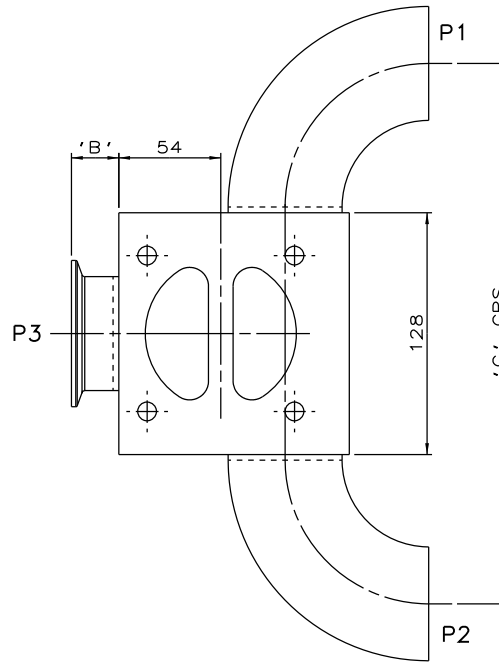


DN50 MAINLINE ONLY



DN65 TO DN100
MAINLINE ONLY



ORIENTATION AS PER
P&ID DIAGRAM FOR
OPTIMUM DRAINABILITY.

The information on this sheet is Private and Confidential and is the property of Crane Process Flow Technologies Limited and must not be published directly or indirectly in any manner whatsoever without the written permission of the Company and must not be used in any way detrimental to their interests.
© Crane Process Flow Technologies



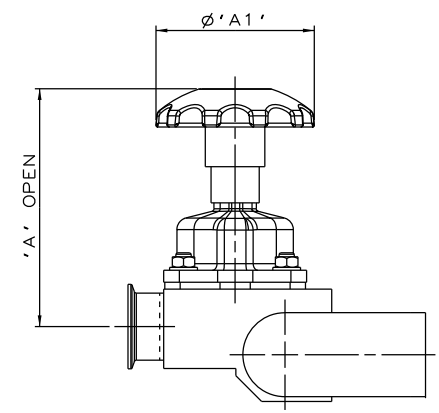
Process Flow Technologies
A Crane Co. Company



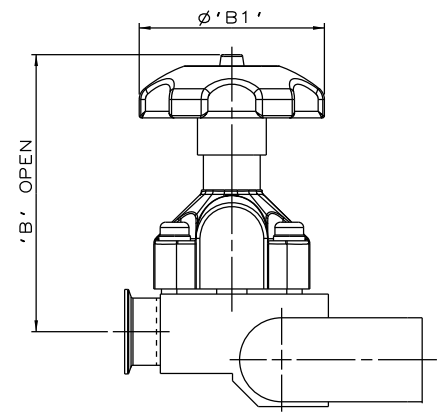
Title
SCHEDULE OF LEADING DIMENSIONS FOR
DN50 WEIR POINT OF USE 'T' BODY WITH :
MAINLINE : ISO 1127 S1 BUTT WELD ENDS
BRANCH : DN50 HYGIENIC CLAMP END WITH
ISO 1127 S1 BORE

| | | | |
|---------------------------------|---------------|------------------------|-------------|
| Drawn R1 | Date 17.04.12 | UNCONTROLLED IN | |
| Checked RND | Date 17.04.12 | HARD COPY FORMAT | |
| First Angle Projection Method E | DO NOT SCALE | Drawing No. WEB-189 | Issue. 1 |

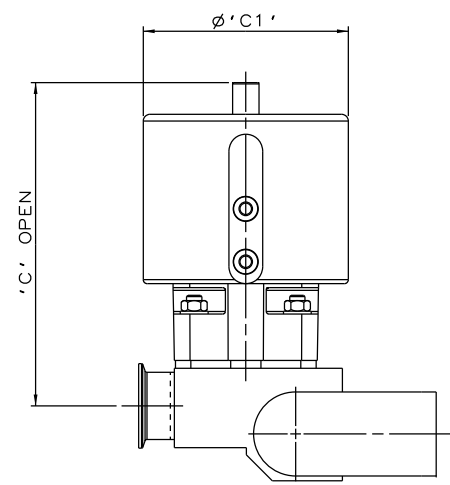
| MAINLINE SIZE | A | B | C | D | øE | øF | G | BODY WEIGHT |
|---------------|-------|------|------|------|-------|-------|-------|-------------|
| mm | mm | mm | mm | mm | mm | mm | mm | Kgs |
| DN50 | 76.0 | 25.0 | 34.1 | 46.5 | 60.3 | 55.1 | 286.0 | 6.1 |
| DN65 | 95.0 | 25.0 | 42.0 | 55.0 | 76.1 | 70.9 | 338.0 | 6.7 |
| DN80 | 114.0 | 25.0 | 48.4 | 60.0 | 88.9 | 83.7 | 376.0 | 7.4 |
| DN100 | 152.0 | 25.0 | 61.1 | 70.0 | 114.3 | 109.1 | 452.0 | 9.8 |



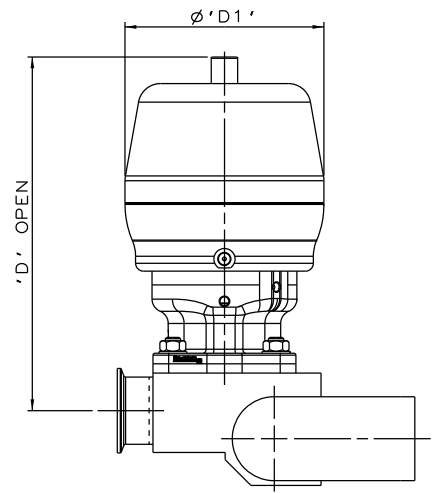
SS NON SEALED BONNET ASSEMBLY



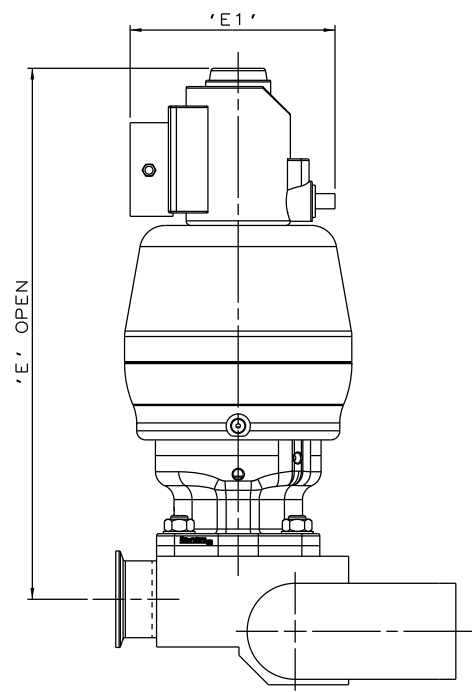
PES BONNET ASSEMBLY



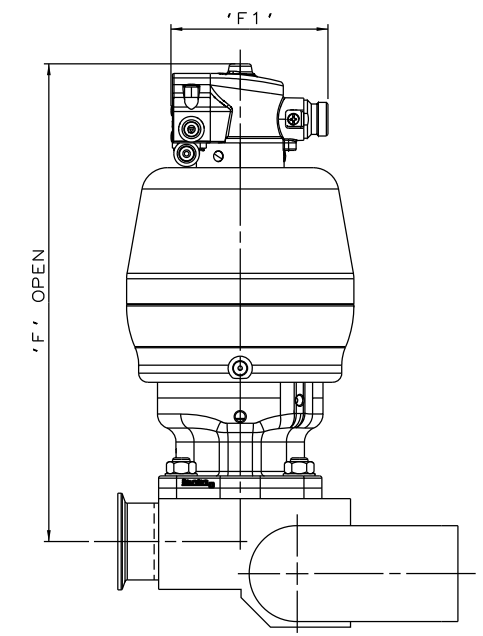
EC ACTUATOR (ALL MODES)



*S360 ACTUATOR



*S360 ACTUATOR WITH I-VUE SENSOR



*S360 ACTUATOR WITH M-VUE SENSOR

The information on this sheet is Private and Confidential and is the property of Crane Process Flow Technologies Limited and must not be published directly or indirectly in any manner whatsoever without the written permission of the Company and must not be used in any way detrimental to their interests.
 © Crane Process Flow Technologies

CRANE Process Flow Technologies
 A Crane Co. Company

Saunders
 The Science Inside

Title
 SCHEDULE OF LEADING DIMENSIONS FOR DN50/2.00 WEIR 'T' BODY WITH MAINLINE BUTT WELD ISO 1127 S1 ENDS, BRANCH HYGIENIC CLAMP END WITH ISO 1127 S1 BORE. FITTED WITH TOPWORKS OPTIONS

Drawn JRD Date 15.09.16 UNCONTROLLED IN HARD COPY FORMAT
 Checked RND Date 15.09.16

First Angle Projection Method E DO NOT SCALE Drawing No. WEB-189-ASSY Issue. 1

*DIMENSIONS SHOW MAXIMUM ENVELOPE FOR ALL MODES

| BRANCH SIZE | | A | | A1 | | B | | B1 | | C | | C1 | | D | | D1 | | E | | E1 | | F | | F1 | |
|-------------|------|-------|------|-------|------|-------|------|-------|------|-------|------|-------|------|-------|-------|-------|------|-------|-------|-------|------|-------|-------|-------|------|
| mm | inch | mm | inch | mm | inch | mm | inch | mm | inch | mm | inch | mm | inch | mm | inch | mm | inch | mm | inch | mm | inch | mm | inch | mm | inch |
| DN50 | 2.00 | 184.2 | 7.25 | 120.0 | 4.72 | 213.2 | 8.39 | 140.0 | 5.51 | 248.2 | 9.77 | 155.0 | 6.10 | 271.2 | 10.68 | 150.0 | 5.92 | 355.2 | 13.98 | 136.0 | 5.35 | 319.2 | 12.57 | 103.8 | 4.09 |